



GTF™

39899 Balentine Drive, Suite 125
Newark, CA 94560

Phone: 510 651 5122
Fax: 510 651 5127

Generalized Timing Formula Standard

Version: 1.1

September 2, 1999

Purpose

The VESA Generalized Timing Formula is a standard method for generating general-purpose display timings. While bringing standardization, it does not restrict the market to fixed, pre-defined formats or refresh rates, and thus allows differentiation within a standardized environment.

Summary

VESA has defined a standard method by which new formats and timings can be generated. This will allow much greater flexibility in the choice of refresh rates and pixel formats than currently available with existing discrete monitor timings. GTF describes a computational method that will provide standardization, and yet also enable new features, such as user defined image resolution and low-cost, automatic self-alignment of display devices, to be added to graphics systems and monitors,

Version 1.1 explains the usage of GTF parameters for a Secondary GTF curve; a concept called "Secondary GTF".

Intellectual Property

Copyright © 1994, 1995, 1996, 1999 Video Electronics Standards Association. All rights reserved.

While every precaution has been taken in the preparation of this standard, the Video Electronics Standards Association and its contributors assume no responsibility for errors or omissions, and make no warranties, expressed or implied, of functionality or suitability for any purpose.

Trademarks

All trademarks used within this document are the property of their respective owners. VESA is a registered trademark of the Video Electronics Standards Association.

Patents

VESA proposals and standards are adopted by the Video Electronics Standards Association without regard to whether their adoption may involve any patents or articles, materials or processes. Such adoption does not assume any liability to any patent owner, nor does it assume any obligation whatsoever to parties adopting the proposals or standards documents.

Support

Clarifications and application notes to support this standard may be written. To obtain the latest standard and any support documentation, contact VESA.

If you have a product that incorporates GTF™, you should ask the company that manufactured your product for assistance. If you are a manufacturer, VESA can assist you with any clarification you may require. All comments or reported errors should be submitted in writing to VESA using one of the following methods.

- Fax: 510 651 5127, *direct this note to Technical Support at VESA*
- Email: support@vesa.org
- Mail: Technical Support
Video Electronics Standards Association
39899 Balentine Drive, Suite 125
Newark, CA 94560

Acknowledgments

This specification would not have been possible without the valuable contributions and support from the following members of the GTF work group:

Andy Morrish (GTF Work Group Leader)	National Semiconductor
Dave Eagle	IBM
Ricky Jackson	IBM
Hans van der Ven	Panasonic
Bob Myers	Hewlett-Packard
Anders Frisk	ICL
Tom Ryan	SciTech
Kendall Bennett	SciTech
Joe Goodart	Compaq
Paul Doyle	Sony

Version 1.1

Anders Frisk (GTF Document editor, work group leader)	Nokia
Hans van der Ven	Panasonic
Joe Goodart	Dell
Alain d'Hautecourt	ViewSonic

GTF EXCEL™ SPREADSHEET

As part of this standard, a companion EXCEL™ V4.0 spreadsheet is available from the VESA FTP site (GTF_V1R1.XLS), or from the VESA office. This spreadsheet illustrates the GTF method and allows manual computation of timing parameters and demonstration of the computation method. This written specification documents the mathematical methods behind the spreadsheet in order to demonstrate how GTF can be programmed into software.

In case of any confusion or dispute regarding interpretation or calculation of any of the GTF variables in any implementation, the released version of GTF spreadsheet shall be used as the definitive calculation method to demonstrate correct computation of the parameters.

REVISION HISTORY

Version 1.0 Revision 1.0, December 8, 1996

Initial release of GTF Standard

Version 1.1

Secondary GTF curve concept defined.

TABLE OF CONTENTS

INTELLECTUAL PROPERTY	2
GTF EXCEL™ SPREADSHEET	3
REVISION HISTORY	3
1. INTRODUCTION	5
2 TERMS AND DEFINITIONS.....	6
2.1 TIMING PARAMETERS	6
2.2 SYNC PULSE POSITION.....	7
2.3 SYNC PULSE POLARITY	7
2.4 BASIC HORIZONTAL BLANKING DUTY CYCLE FORMULA	8
2.5 ACCURACY OF TIMING PARAMETERS	10
2.6 EXTENDED HORIZONTAL BLANKING FORMULA	11
3 DEFAULT PARAMETER VALUES.....	14
4 SYSTEM VARIABLES	15
5 COMMUNICATING GTF COMPLIANCE THROUGH DDC/EDID.....	16
5.1. DEFINITION OF GTF-COMPLIANT MONITORS AND GRAPHICS SYSTEMS.....	16
5.3 GTF SYSTEM DRIVER WITH GTF-COMPLIANT MONITORS.....	16
5.4 GTF SYSTEM DRIVER WITH NON-GTF DDC MONITORS	16
5.5 GTF SYSTEM DRIVER WITH USER DEFINED LIMITS FOR NON-GTF MONITORS	17
5.6 SUMMARY OF MONITOR DEFAULT GTF COMPLIANCE	18
6 SECONDARY GTF	18
7 COMPUTATION OF TIMING PARAMETERS.....	19
7.1 FLOW CHART OF GTF METHOD	19
7.2 ROUNDING DEFINITION	21
7.3 USING VERTICAL REFRESH FREQUENCY TO FIND STAGE 1 PARAMETERS	21
7.5 USING PIXEL CLOCK FREQUENCY TO FIND STAGE 1 PARAMETERS	24
7.6 USING STAGE 1 PARAMETERS TO DERIVE STAGE 2 PARAMETERS	26
APPENDIX A	30
FIGURES AND TABLES	
FIGURE 1: SYNC PULSE TIMING DEFINITIONS.....	7
FIGURE 2: BASIC HORIZONTAL DUTY CYCLE CURVE.....	10
FIGURE 3: BLANKING DUTY CYCLE CURVES WITH VARIATIONS IN K.....	12
FIGURE 4: EXAMPLES OF VARIATIONS IN K, J, C AND M	13
FIGURE 5: THE GTF CALCULATION	20
TABLES 1A AND 1B: GTF SYNC POLARITIES	8
TABLE 2: DEFINITION OF [I/P PARAMETER]	15
TABLE 3: SUMMARY OF MONITOR DEFAULT GTF COMPLIANCE	18

1. INTRODUCTION

GTF is a standard method for generating general-purpose display timings. While bringing standardization, it does not restrict the market to fixed, pre-defined formats or refresh rates and therefore allows differentiation within a standardized environment.

GTF is intended as a tool to be used by all parties concerned with video signal generation. Video graphics software drivers should utilize the GTF method to generate timing parameters for any new, previously unspecified video modes, either spontaneously within the PC from a set of system inputs, or in pre-defined and stored tables. Video graphic generation hardware should use and be compatible with the GTF method for definition of any new modes of operation. Monitor designs should use the GTF method to determine how to interpolate for new unrecognized timings, and consequently set image size and geometry parameters.

A principle objective of GTF is to allow predictable timing parameters to be derived from minimal information. Using GTF, it is possible to construct a complete set of timing parameters given the following basic information:

- 1) Pixel format (e.g. 800x600)
- 2) Whether or not overscan borders are required
- 3) Whether interlace is required
- 4) ONE of the following:
 - Vertical refresh rate required
 - or: Horizontal frequency required
 - or: Pixel clock required

Using any one of the three options in (4) above, the same timing parameters will result from GTF. This allows the calculation to be 'driven' by intelligent system software to obtain best overall system performance, especially in conjunction with plug and play peripherals that can communicate the hardware capabilities. For example, knowing the limitations of a CRT display in vertical and horizontal scan frequencies, the maximum pixel clock rate of a graphics card, the desired vertical refresh rate of a User and the pixel format from an application, new system software can generate a new timing to meet the constraints of the hardware. Most importantly, the GTF method also allows the possibility for displays to predict where the image may fall, and thus enables the possibility of automatic image set up for any new mode.

A further objective is to minimize compatibility problems that frequently result when graphics cards generate unique timings or cannot meet the exact timing parameters of standard formats. GTF provides a means for graphics cards to generate these unique timings based around default timing characteristics that can be supported by most monitors.

Another use of GTF is to enable new timing parameters to be generated for displays running at a constant horizontal scan frequency, potentially allowing simplified and lower-cost display designs. This will also result in maximized vertical refresh rates, which is generally seen as an ergonomic advantage.

In order to minimize the amount of information required at time of computation, and also to ensure basic standardization and compatibility in formats that are produced, it is necessary to standardize the values of all other variables that influence the calculation of timing parameters. In this specification, a standard definition and default value is given to each of these variables, in addition to a standard method of timing parameter computation.

The GTF standard can be used with any pixel clock reference frequency, and will provide timings within the hardware constraints of this and other system parameters. However, it is expected that some applications will continue to require specific discrete timing standards, as in the case of timings intended to be compatible with video or other systems. In order to permit such timings to be produced as precisely as possible, and to increase the likelihood that controllers from different manufacturers will produce identical timings using either GTF or current and future discrete timings, VESA recommends that the fixed reference frequency (i.e. typically the fixed crystal

reference used by the video phase locked oscillator for subsequent programmable pixel clock synthesis) be one selected from the $N \times 2.25\text{MHz}$ family of rates. This set has been selected for its compatibility with worldwide video timing standards, and will also be used wherever possible in future Discrete Monitor Timing (DMT) standards produced by VESA. While this is a recommendation, it should be noted that use of a reference from this particular set is not a requirement for compliance to the VESA GTF standard.

Secondary GTF

Secondary GTF is a method for using the generalized timing formula to describe two separate functions that describe the relationship between the monitor timing signals. Both functions use the same formula, but with different parameter values. By using the default parameter values as defined in this document you produce the default GTF curve. This curve describes the relationship between horizontal frequency and blanking time. The default GTF curve is suitable for most CRT monitors, however, there are monitor designs that can work with shorter blanking times than what the default GTF describes. The second GTF curve can be used to describe the relation between timing signals when the monitor is operating in a mode with reduced blanking.

2 TERMS AND DEFINITIONS

2.1 Timing Parameters

Several different sync formats are used by display systems, including separate syncs, composite syncs and sync-on-green. GTF has been formulated for optimum compatibility. In addition, careful consideration has been given to the choice of sync width and positioning relative to the video to ensure best operation with the majority of present day display technology.

The following definitions are used within this specification to describe the important timing intervals (see figure 1):

Addressable Video (t_{video})

The period during which active image video information is transmitted.

Margin (t_{margin})

The period during which background colored border maybe displayed in order to allow the CRT image to extend beyond the limits of the surrounding bezel on overscan type monitors. Typically, the margin period cannot be addressed on an individual pixel basis by the image buffer. On most non-overscan type systems, the margin period is zero.

Blanking (t_{blank})

The period between the end of one line (horizontal) or frame (vertical) of the video and margin period, and the start of the next line or frame of video.

Sync pulse width (t_{sync})

The period of the active sync pulse.

Front porch (t_{fp})

The period between the end of one line (horizontal) or frame (vertical) of the video and margin period, and the start of the sync pulse.

Back porch (t_{bp})

The period between the end of the sync pulse and the start of the next line (horizontal) or frame (vertical) of the following video and margin period.

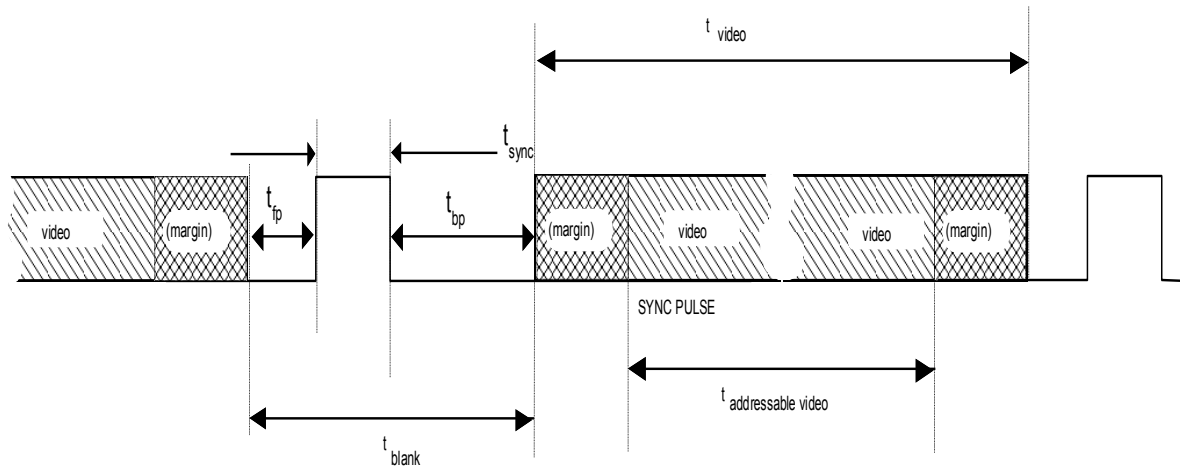


Figure 1: Sync Pulse Timing Definitions

2.2 Sync Pulse Position

A major source of incompatibility in discrete timings is the variability in position of the sync pulses within the blanking period, which in turn causes variation in the displayed image position. To overcome this, GTF uses a standard definition to ensure the predictability of the sync position within the blanking period. From the following information (see also Section 3 - DEFAULT PARAMETER VALUES), and that attained during manufacturing alignment, it is possible for display devices to estimate to a reasonable degree of accuracy where to position the image of any new previously unknown modes.

The horizontal sync pulse period is defined as a fixed percentage of the total line period. The trailing edge of the pulse is positioned exactly midway within the total blanking period. This ensures there is always sufficient time after the sync pulse for the generation of video DC recovery signals. The vertical sync pulse is defined as a fixed integer number of horizontal line periods. The position of the vertical sync pulse is determined by the front porch period, which is also set as a fixed number of horizontal line periods. For the special case of interlaced displays, an additional half line is added to this period for alternate fields.

2.3 Sync Pulse Polarity

The sync polarities used for **Default GTF** should be as follows in Table 1a:

<u>SYNC FORMAT</u>	<u>POLARITY</u>
HORIZONTAL	NEGATIVE
VERTICAL	POSITIVE
COMPOSITE	NEGATIVE

Table 1a

The sync polarities used for **Secondary GTF** should be as follows in Table 1b:

<u>SYNC FORMAT</u>	<u>POLARITY</u>
HORIZONTAL	POSITIVE
VERTICAL	NEGATIVE
COMPOSITE	NOT SUPPORTED

Table 1b

Tables 1a and 1b: GTF Sync Polarities

Choice of sync pulse polarity is important because this aids the monitor in identifying which particular mode is being displayed, and therefore how to set the parameters controlling the displayed image size and position, etc. While all combinations of polarities exist in use, some polarity combinations are used more than others; for instance, VESA DMTs typically use positive going sync signals.

An additional consideration is that the GTF timing for 640x480 at 31.5kHz gives horizontal timing parameters identical to standard VGA when no margins are used. However, under these conditions, the vertical refresh rate is slightly faster. To avoid confusion between these modes, the GTF sync polarities have been chosen to be different from those of standard VGA.

2.4 Basic Horizontal Blanking Duty Cycle Formula

Horizontal blanking duty cycle has a great impact on the system design, particularly as there are many opposing requirements. Making blanking time long, for instance, has both advantages and disadvantages:

Advantages:

- Lower cost, lower power dissipation horizontal scan/CRT yoke design at high frequencies
- More time for video RAM update during blanking interval

Disadvantages:

- Higher power dissipation horizontal scan/CRT yoke design at low frequencies
- Higher pixel clock operation, more expensive graphics chip sets, RAM, etc.
- Higher video rate and amplitude, requiring expensive, high power dissipation video amplifiers
- More RFI (radio frequency interference)
- Lower brightness/higher instantaneous CRT drive requirements, giving poor spotsize, focus, etc.

Variations in blanking times between formats also causes major differences in the displayed image width and position. For predictability of any standard timing, it is imperative for the GTF to have a standard method to define (and thus predict) the blanking time at any operating point. As communication between monitor and CPU cannot be assumed, it must be possible for the monitor to be able to compute the blanking time, using either analog or digital methods, by using a simple relationship linking blanking time to the horizontal period or frequency.

When defined as a percentage of the horizontal period, blanking duty cycle is given by:

$$\text{Blanking Duty Cycle (\%)} = (1 - (t_{\text{active}} / T)) * 100 (\%) \quad [1]$$

where:

t_{active} = the active video time
 T = the horizontal period = $1/F$

where:

F = Horizontal frequency

Note also that active video time can be expressed as:

$$t_{\text{active}} = \frac{n}{P} \quad [2]$$

where:

n = no of horizontal active video image pixels
 P = Pixel clock frequency

Combining these, the blanking duty cycle can also be simply expressed as:

$$\text{Blanking Duty Cycle (\%)} = (1 - \frac{(F * n)}{P}) * 100 (\%) \quad [3]$$

These various forms of the same definition are used within the GTF to derive different horizontal timing parameters.

The general form of the horizontal blanking equation used within the GTF is:

$$\text{Blanking Duty Cycle (\%)} = C' - (M' / F) \quad [4]$$

where:

F = Horizontal frequency (kHz)
 C' = Basic offset constant (%)
 M' = Basic gradient constant (%/kHz)

This equation has been chosen for its empirical best fit to the average existing industry standard timings used with most monitors.

Figure 2 below shows a scatter plot of some standard timings and the curve resulting from this equation using default values of:

C' = 30
M' = 300

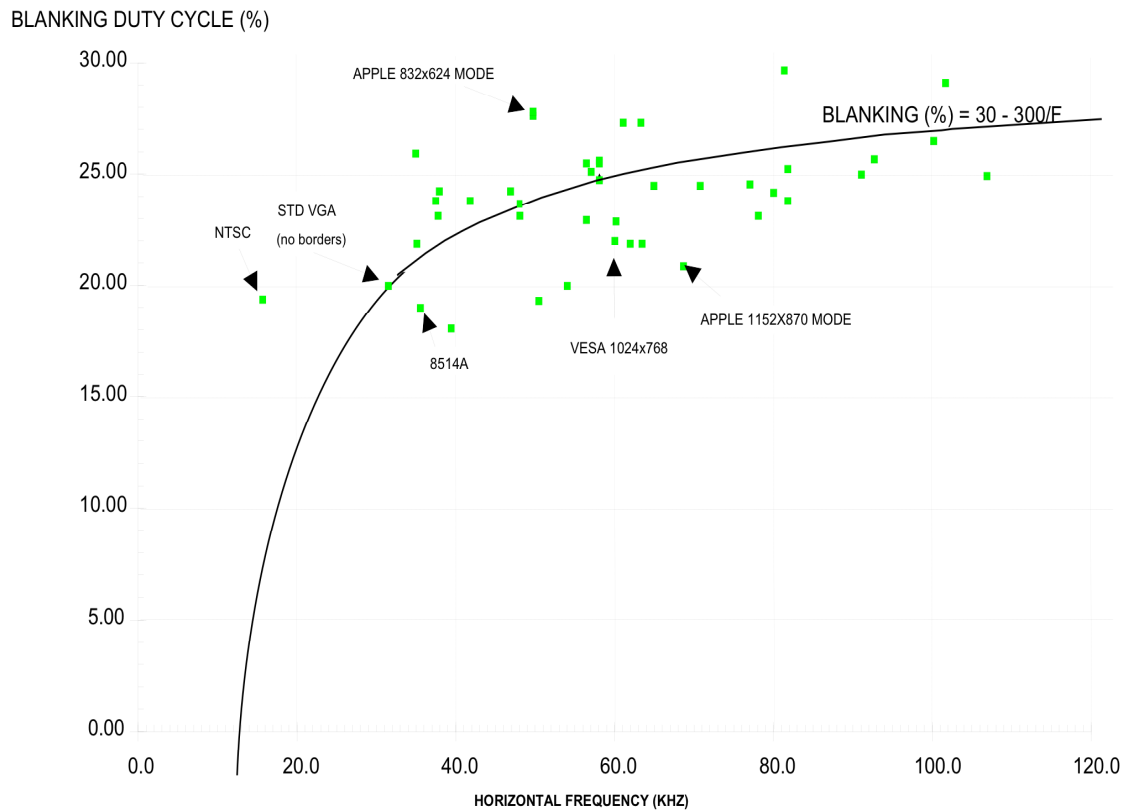


Figure 2: Basic Horizontal Duty Cycle Curve

It can be seen that the empirically derived curve lies midway between existing modes. It also hits the 20% point at the 60Hz VGA frequency, which is a valuable aid to compatibility.

Using the formula linking blanking time to horizontal frequency, it is possible to establish a direct relationship between pixel clock frequency and horizontal frequency:

Combining equations [3] and [4] gives:

$$F = \frac{2 * M'}{(C' - 1) \pm \sqrt{\left((1 - C')^2 + \frac{4 * M' * n}{P} \right)}} \quad [5]$$

This unique relationship between these parameters is a critical feature of GTF. For any given pixel format, there is always a direct relationship between pixel clock and horizontal frequency - if one parameter is known, the other can be computed. It is this attribute that allows the mode definition to be reduced to the simplified form of requiring only one defining frequency.

2.5 Accuracy of Timing Parameters

The equation given in [4] above, has a fundamental importance to the design of a system that will allow automatic centering and width adjustment in a monitor when new modes are encountered. By measuring the horizontal

frequency (a requirement in multisync monitors for mode recognition) blanking duty cycle, and hence, period, can be easily computed.

Theoretical accuracy of the predicted image position is limited due to the quantization effect arising from the number of pixels within the character cell and subsequent rounding errors. This results in a theoretical error of +/- half a character cell in the horizontal position of either side of the image, giving a total possible error of +/- one character cell in width and overall centering. In practice, small errors may also result from inaccuracies of the deflection system, depending upon the quality of the display system design.

The accuracy of blanking period determination (and subsequent size estimation for a new mode) within the monitor will be dependent upon each individual implementation, but this allows the monitor designer considerable scope for trading off accuracy versus cost/complexity. As a standard formula is used, monitors can use microprocessors to either compute the blanking time (having measured horizontal frequency) directly, or by using look-up tables. Analog monitors can use analog computational methods, converting frequency to voltage to derive an analog signal proportional to the blanking time.

2.6 Extended Horizontal Blanking Formula

In order to make GTF as general as possible, and also to allow future GTF versions for display devices other than CRTs (which may require considerably different values of timing parameters) the basic constants C' and M' within the basic horizontal blanking formula have been expanded. The Secondary GTF concept introduced in version 1.1 of this standard defines how these parameters are used to define a Secondary GTF curve for displays that can operate with reduced blanking above a certain horizontal frequency:

$$[C'] = (([C] - [J]) * [K] / 256) + [J] \quad [6]$$

$$[M'] = [K] / 256 * [M] \quad [7]$$

Where:

- C = Extended offset constant (%)
- M = Extended gradient constants (%/kHz)
- K = Blanking time scaling factor
- J = Scaling factor weighting

Note that:

$$\begin{aligned} C' &= J \\ M' &= 0 \\ &\text{for } K = 0 \end{aligned}$$

and:

$$\begin{aligned} C' &= C \\ M' &= M \\ &\text{for } K = 256 \end{aligned}$$

Software versions of GTF should code the coefficients C' and M' as variables defined in this way, even though they are subsequently treated as constants. Specifically, K , the blanking time scaling factor, allows a single coefficient to be used to alter the characteristics of the basic blanking equation. Altering K from its default value of 128 allows a series of curves to be produced passing through the 20% duty cycle at VGA frequencies, but with higher or lower blanking duty cycle at high frequencies, as show in figure 3.

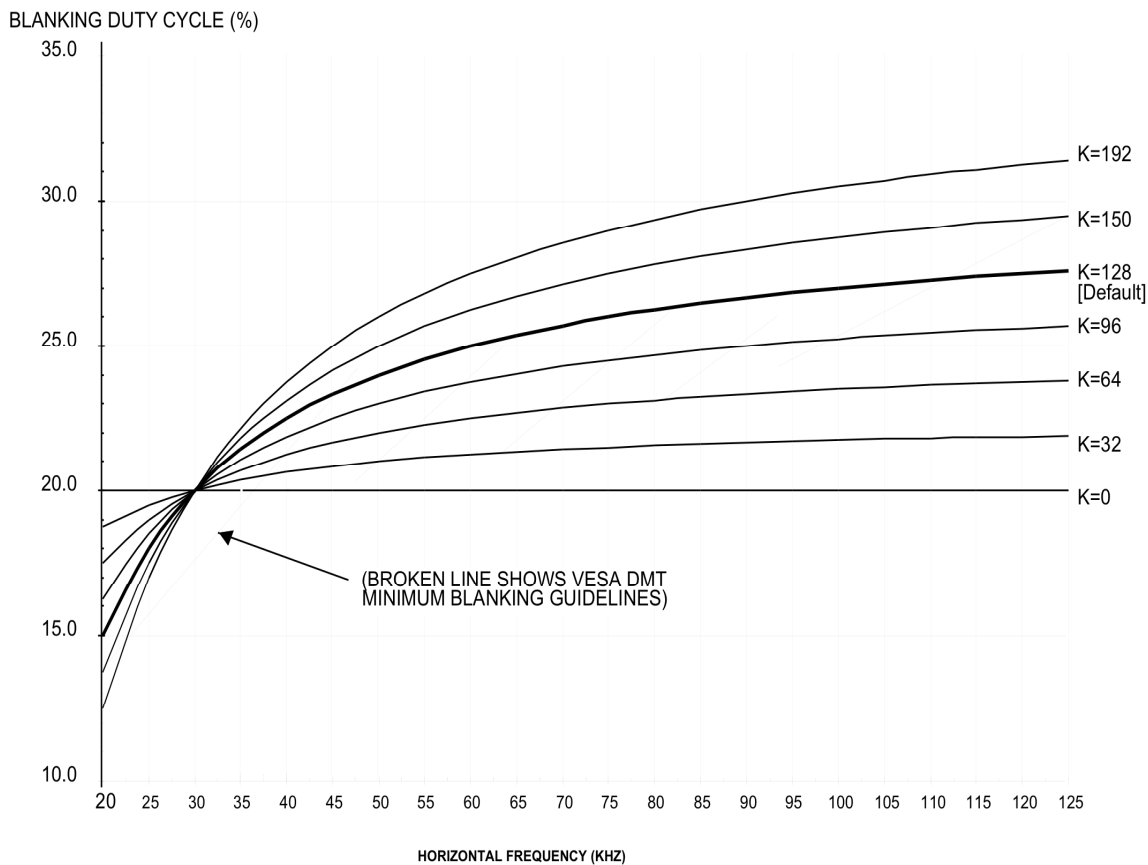
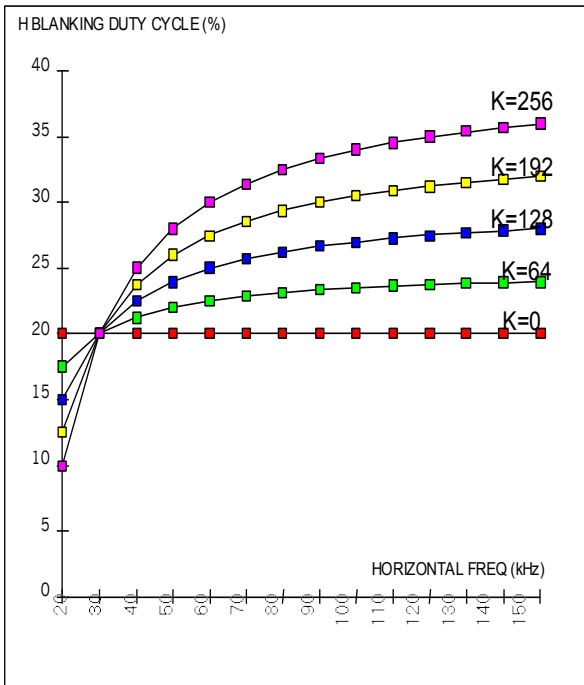
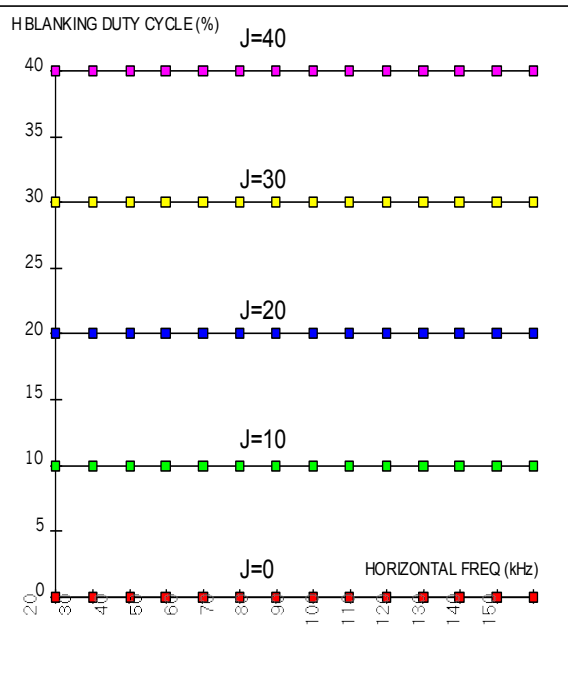


Figure 3: Blanking Duty Cycle Curves with Variations in K

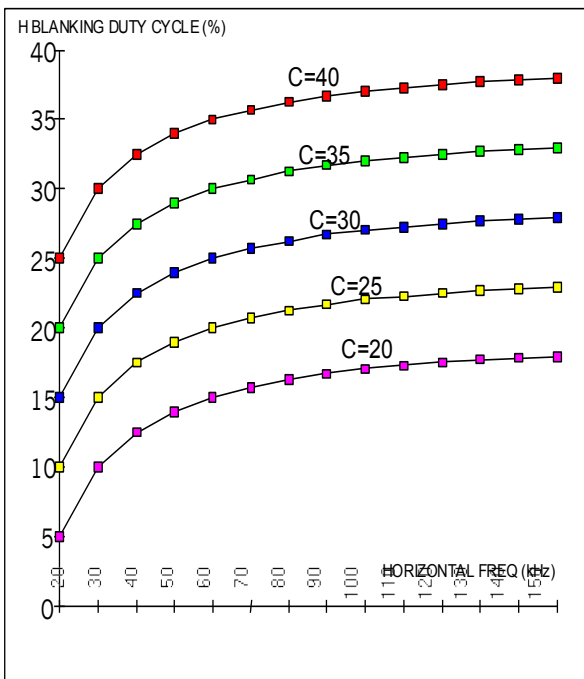
While the majority of applications will use the default values for C, M, K and J, future applications that support a secondary GTF curve as defined in the Secondary GTF chapter of this document will use other values for these parameters. However, in the absence of explicit support for a second GTF curve listed in EDID, the defined default values must be used at all times. Figure 4 shows the effect of variations in the extended blanking constants.



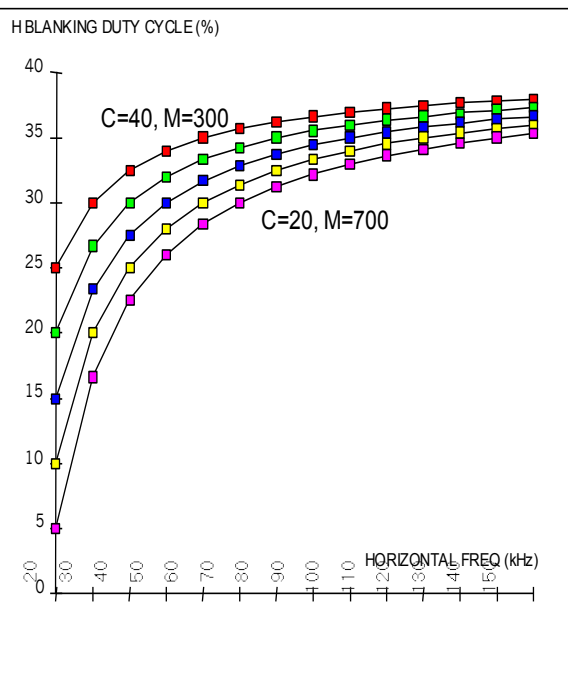
C=40, J=20, M= 600, K in increments of 64



C=30, K=0, M= ANY VALUE, J in increments of 10



M=300, K=256, J=ANY VALUE,
C in increments of 5



K=256, J=ANY VALUE,
C in increments of 5, M in increments of 100

Figure 4: Examples of Variations in K, J, C and M on Blanking Time versus Horizontal Frequency

3 DEFAULT PARAMETER VALUES

In the GTF formula, several parameters are defined that are considered constants although they should in fact be treated as variables with a defined value. These variables define critical timing parameters and are vital for the GTF system to operate satisfactorily that consistent values are used within any given system. In order to meet these requirements a default set of values has been set for the default GTF curve for use with CRT displays.

VESA recognizes that as display technologies improve, different parameter values may be required in the future; for example, a flat panel display device may require shorter blanking times. It may be possible to allow the variables to be changed by allowing the display device to send information to the system detailing that it can use different values for these parameters than specified by the default values. However, in order to maintain GTF compatibility, it will be a prerequisite that variables with a different value shall only be used when bi-directional communication exists between the display device and the graphics system. The Secondary GTF method described in section 6 of this document is an example of how other parameter values can be used. The exception to this is the character cell granularity default value, **[CELL GRAN]**. The default value is the value that may be assumed by the other components in the system (e.g., the monitor), but the graphics system itself should use the smallest value available at the given operating point.

The following parameters are used within the GTF calculations. The default values should be used in all cases except as outlined above:

[MARGIN%] **DEFAULT VALUE:** **1.8%**
The size of the top and bottom overscan margin as a percentage of the active vertical image.

[CELL GRAN] **DEFAULT VALUE:** **8 pixels**
The assumed character cell granularity of the graphics system. In practice, the system may use a different number, although minimum values should always be used where possible.

[MIN PORCH] **DEFAULT VALUE:** **1 line/char cell**
The minimum front porch in lines (vertical) and character cells (horizontal)

[V SYNC RQD] **DEFAULT VALUE:** **3 lines**
The width of the V sync in lines.

[H SYNC%] **DEFAULT VALUE:** **8%**
The width of the H sync as a percentage of the total line period.

[MIN VSYNC+BP] **DEFAULT VALUE:** **550us**
Minimum time of vertical sync + back porch interval (us).

[M] **DEFAULT VALUE:** **600%/kHz**
The blanking formula gradient (see also section on blanking formula).

[C] **DEFAULT VALUE:** **40%**
The blanking formula offset (see also section on blanking formula).

[K] **DEFAULT VALUE:** **128**
The blanking formula scaling factor (see also section on blanking formula).

5 COMMUNICATING GTF COMPLIANCE THROUGH DDC/EDID

5.1. Definition of GTF-Compliant Monitors and Graphics Systems

To be 'GTF-compliant' a monitor should be designed such that it treats any new, unknown modes with sync signal polarities according to section 2.3 as GTF modes. The monitor hardware and/or software shall be optimized to minimize any position or size errors in the displayed image based upon that assumption. No portion of any GTF derived image should be hidden or reversed, and any GTF image should be completely visible within the displayable area.

The EDID of a GTF-compliant monitor shall signify that the GTF assumption is used for new mode calculation by setting appropriate GTF flags in EDID and must communicate the limits of operation in a Monitor Descriptor Block according to section 5.2. If no limits of operation are included, the monitor must be treated as non-GTF compliant, as per section 5.4 or 5.5.

GTF-compliant graphics systems must be capable of determining whether the attached monitor is GTF-compliant, through reading the EDID, and must be capable of handling both GTF-compliant and non-GTF monitors according to the methods outlined below. Any new formats produced by the graphics system must be created with all timing parameters according to the GTF definition.

In all cases, when the graphics system derives new timings, the system software must ensure that all timing parameters produced remain within the limits of capability of the hardware. If the value of an input parameter (such as a refresh rate requirement) causes the output parameters to lie outside of the range of capabilities of the hardware, the system should not allow the use of that timing.

5.2 Communicating Limits of Monitor Operation for GTF Compliant Monitors

The GTF-compliant monitor must communicate its range of operation by defining the Pixel clock, Horizontal and Vertical scan frequency ranges in a Monitor Range Limits Descriptor block within the EDID structure version 1, revision 1 and higher.

The GTF-compliant graphics system must be capable of reading these limits and using them to calculate any new timing requirements.

5.3 GTF System Driver with GTF-Compliant Monitors

If the EDID indicates that the monitor is GTF-compliant the graphics system using the GTF method may automatically generate new timings within the range of the operating frequencies as signified in the Monitor Descriptor block.

5.4 GTF System Driver with Non-GTF DDC Monitors

This method should only be used for non-GTF monitors (i.e.,: when bit 0 of the 'Feature Support' byte is set to 0, or if no Monitor Descriptor Block is included). It is included mainly to allow existing DDC monitors to be used with a GTF system driver.

It must be noted that the non-GTF monitor may not be capable of automatically displaying the image on the screen within acceptable limits of operation, or may require significant manual adjustment by the User. When a monitor with bit 0 of the 'Feature Support' byte set to 0 is used, it is mandatory that the system software display a suitable warning message to the User stating that the User should check for normal operation of the monitor and that adjustment may be necessary before switching to the new GTF mode. It is also recommended that the system will prompt the User to confirm that the new mode is viewable within a specified time period. If no confirmation is received by the end of that period, the system can revert back to the previous known preset mode.

If bit 1 of the 'Feature Support' byte is set to 1 but no Monitor Descriptor Block is given, it can be assumed that the monitor is compatible with GTF signals, but not fully compliant, and it is optional to display the warning message within the calculated range as determined by the following method. Outside of this calculated range, it must be treated according to section 5.5.

The system driver will derive information regarding the monitor limits of operation from the list of timings supported by the monitor and listed in the EDID as follows and will not drive the monitor outside of this range, unless overridden by User defined limits (as according to Section 5.5):

Horizontal rate range

- The minimum horizontal scan rate is defined as the lowest scan rate specified in any Established, Standard or Detailed Timing supported by the monitor, or the lower limit of the GTF equation, whichever is greater.
- The maximum horizontal scan rate is defined as the highest scan rate specified in any Established, Standard or Detailed Timing supported by the monitor.

Vertical rate range

- The minimum vertical refresh rate is defined as the lowest refresh rate specified in any Established, Standard or Detailed Timing supported by the monitor, or the lower limit of the GTF equation, whichever is greater.
- The maximum vertical refresh rate is defined as the highest refresh rate specified in any Established, Standard or Detailed Timing supported by the monitor.

Pixel clock

- The maximum pixel clock is defined as the maximum pixel clock defined in any Established, Standard or Detailed Timing supported by the monitor.

No overscan margins can be used when range limits are specified using this method.

5.5 GTF System Driver with User Defined Limits for Non-GTF Monitors

At the system designer's discretion, a manual method may be used to allow the User to check and directly override limits of monitor operation. Such a method may be useful when:

- a) The monitor is an older model that does not communicate via DDC
- b) The limits of existing modes, as calculated by the method outlined in Section 5.4, do not represent full use of the monitor's capabilities

The manual method of setting GTF timings should not be used to override the limits as specified in a GTF-compliant monitor.

It must be noted that timings produced by this method may be outside the safe operating limits of the monitor. Also, the monitor may not be capable of automatically displaying the image on the screen within acceptable limits of operation, or may require significant manual adjustment by the User. When the manual method is used to override limits of operation, it is mandatory that the system software display a suitable warning message to the User stating that the User should check for normal operation of the monitor, and that adjustment may be necessary before switching to the new GTF mode. It is recommended that the system prompt the User to confirm that the new mode is viewable within a specified time period. If no confirmation is received by the end of that period, the system can revert back to the previous known preset mode.

5.6 Summary of Monitor Default GTF Compliance

Default GTF EDID Feature Support byte	EDID Range Limits Descriptor block	Default GTF COMPLIANT	GTF SYSTEM WARNING
0	NOT PRESENT	NO	MANDATORY
0	PRESENT	NO	MANDATORY
1	NOT PRESENT	NO	OPTIONAL - inside existing limits MANDATORY - outside existing timing limits
1	PRESENT	YES	NOT NECESSARY

Table 3: Summary of Monitor Default GTF Compliance

6 Secondary GTF

While most CRT displays will only operate with blanking times described using the default GTF curve, there are displays that can operate with shorter blanking times than those defined by GTF using the default values for the parameters C, M, K and J defined in Section 3 DEFAULT PARAMETER VALUES.

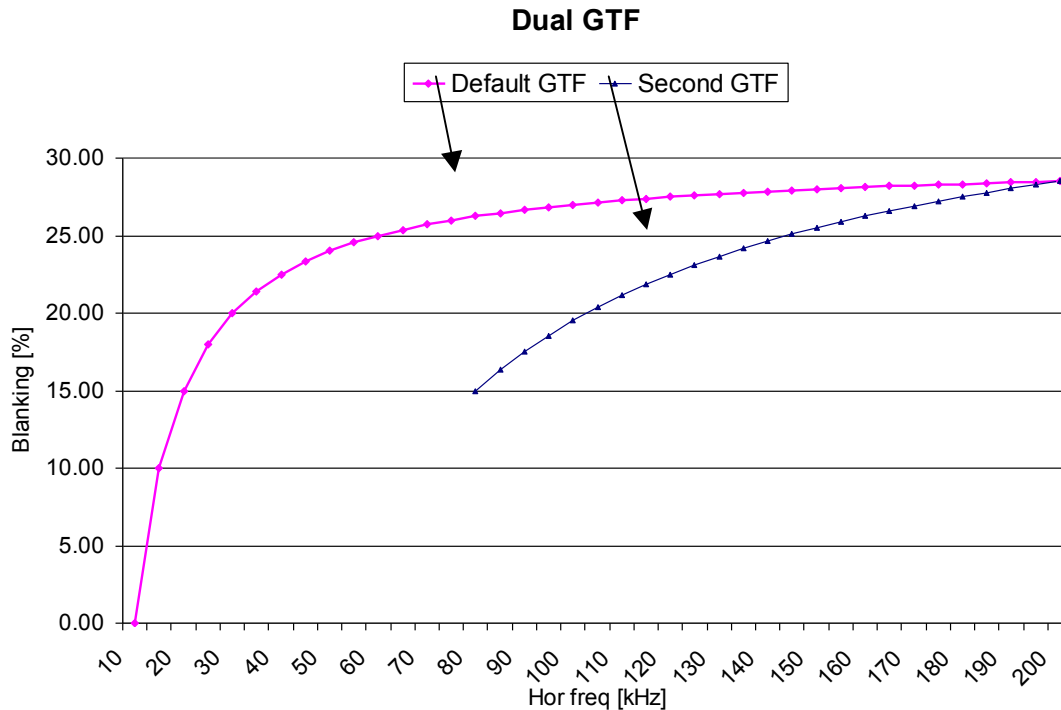
This class of reduced blanking displays can use a secondary set of parameter values to define a second GTF curve that describes the relation between horizontal frequency and reduced blanking time.

The chart below is an example of default GTF and a second GTF curve. The following second GTF parameter values were used in the example:

Second GTF start frequency = 85kHz

C = 40 K = 128

M=3600 J = 35



As can be seen from this example, the second GTF curve has no definition for horizontal frequencies lower than the horizontal start frequency. The upper horizontal frequency limit for both GTF curves is defined by the maximum horizontal frequency as specified in EDID Monitor Range Limits.

The parameter values for the second GTF curve are defined in the Enhanced EDID Monitor Range Limits Descriptor (introduced in EDID structure ver. 1 rev. 3).

Timings that are intended to conform to the default GTF curve are identified by sync. polarity H-negative, V-positive. Use of the second GTF curve is signaled by sync. polarities H-positive, V-negative.

7 COMPUTATION OF TIMING PARAMETERS

7.1 Flow Chart of GTF Method

When the values of the system variables have been determined from an examination of the system constraints and capabilities, the timing parameters can be calculated as in the flow chart shown in figure 5.

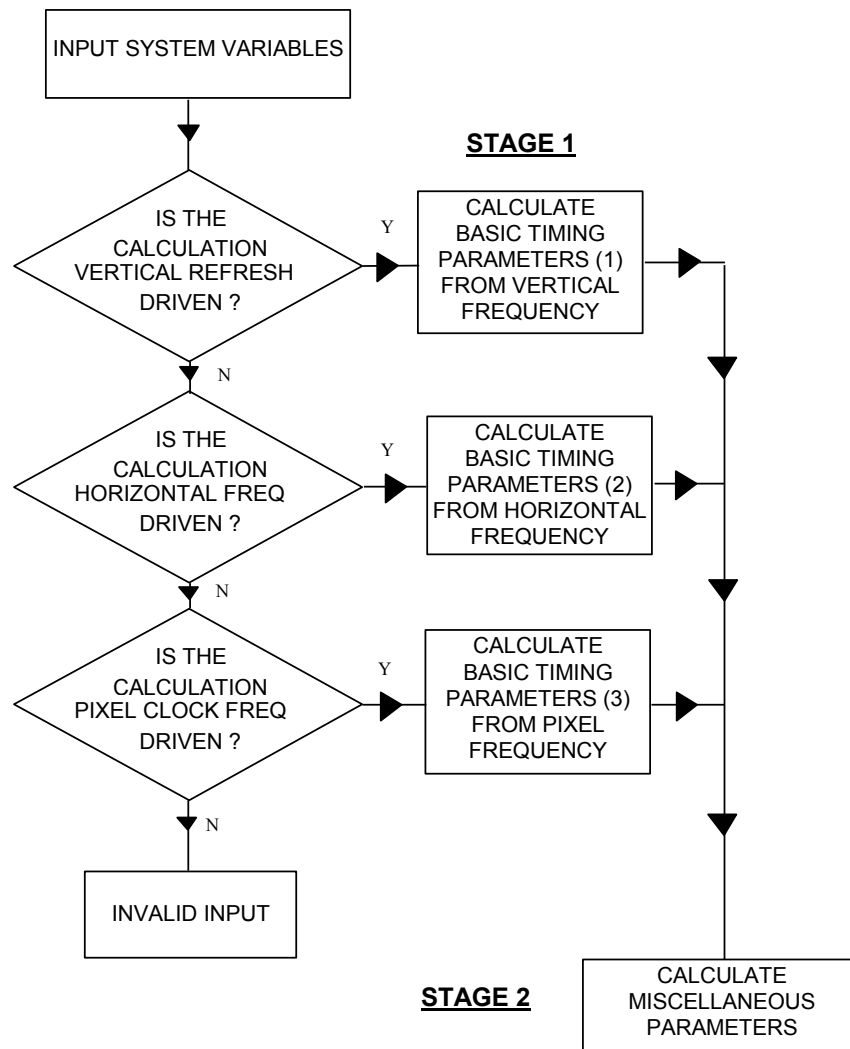


Figure 5: The GTF Calculation

The calculation is carried out in two stages: the first stage determines basic timing parameters. Depending upon whether the input system variable is horizontal, vertical, or pixel clock frequency, different methods are used for calculation of the same basic parameters.

Many of the equations used in the three alternative methods of the first stage are the same, but are carried out in a different sequence. For clarity, the calculation sequence shown below specifies each line of the calculation as if the stages were carried out in isolation, even though the same equations may be used elsewhere. In practice, for code minimization, the same equation routine may be obviously be called from different places.

The second stage determines the remaining miscellaneous parameters.

In these equations, multiple forms of the same parameter may be calculated; e.g.: horizontal period may be calculated in us, pixels and (or?) character cells. These calculations are shown for completeness, though in some instances the actual calculation is trivial.

7.2 Rounding Definition

In the following formula, the Microsoft EXCEL™ definition of ROUND(X,Y) has been used, where

X is the number to be rounded
and Y defines the number of digits to round the number to.

If $Y > 0$ then the number is rounded to the specified number of decimal places.

If $Y = 0$, then the number is rounded to the nearest integer

If $Y < 0$, then the number is rounded to the left of the decimal point.

7.3 Using Vertical Refresh Frequency to Find Stage 1 Parameters

Overview:

Initially, the horizontal period is estimated [H PERIOD EST] by subtracting [MIN VSYNC+BP] from the known vertical period and then dividing by the total number of image lines, including the margin where used. This is only an estimate because the variable [MIN VSYNC+BP] is not exact (i.e. it is not necessarily an integer multiple of the line period).

From this estimate, the number of lines in the period [MIN VSYNC+BP] can be calculated. This then allows the total number of lines in the field to be estimated. When the total number of lines in the field are known, the horizontal period can be accurately found.

Subsequent horizontal timing parameters can be accurately found using the blanking duty cycle equation.

1. In order to give correct results, the number of horizontal pixels requested is first processed to ensure that it is divisible by the character size, by rounding it to the nearest character cell boundary:
$$[H \text{ PIXELS RND}] = ((\text{ROUND}([H \text{ PIXELS}] / [CELL \text{ GRAN RND}], 0)) * [CELL \text{ GRAN RND}])$$
2. If interlace is requested, the number of vertical lines assumed by the calculation must be halved, as the computation calculates the number of vertical lines per field. In either case, the number of lines is rounded to the nearest integer.
$$[V \text{ LINES RND}] = (\text{IF}([\text{INT RQD?}] = "y", \text{ROUND}([V \text{ LINES}] / 2, 0), \text{ROUND}([V \text{ LINES}], 0)))$$
3. Find the frame rate required:
$$[V \text{ FIELD RATE RQD}] = (\text{IF}([\text{INT RQD?}] = "y", [I/P \text{ FREQ RQD}] * 2, [I/P \text{ FREQ RQD}]))$$
4. Find number of lines in Top margin:
$$[TOP \text{ MARGIN (LINES)}] = (\text{IF}([MARGINS \text{ RQD?}] = "Y", \text{ROUND}([MARGIN\%] / 100 * [V \text{ LINES RND}], 0), 0))$$
5. Find number of lines in Bottom margin:
$$[BOT \text{ MARGIN (LINES)}] = (\text{IF}([MARGINS \text{ RQD?}] = "Y", \text{ROUND}([MARGIN\%] / 100 * [V \text{ LINES RND}], 0), 0))$$
6. If interlace is required, then set variable [INTERLACE]=0.5:
$$[INTERLACE] = (\text{IF}([\text{INT RQD?}] = "y", 0.5, 0))$$
7. Estimate the Horizontal period
$$[H \text{ PERIOD EST}] = ((1 / [V \text{ FIELD RATE RQD}] - [MIN \text{ VSYNC+BP}] / 1000000) / ([V \text{ LINES RND}] + (2 * [TOP \text{ MARGIN (LINES)}] + [MIN \text{ PORCH RND}] + [INTERLACE]) * 1000000))$$

8. Find the number of lines in V sync + back porch:

$$[V \text{ SYNC}+BP]=\text{ROUND}(\left(\frac{[MIN \text{ VSYNC}+BP]}{[H \text{ PERIOD EST}]}\right),0)$$
9. Find the number of lines in V back porch alone:

$$[V \text{ BACK PORCH}]=[V \text{ SYNC}+BP]-[V \text{ SYNC RND}]$$
10. Find the total number of lines in Vertical field period

$$[TOTAL \text{ V LINES}]$$

$$=[V \text{ LINES RND}]+[TOP \text{ MARGIN (LINES)}]+[BOT \text{ MARGIN (LINES)}]+[V \text{ SYNC}+BP]+[INTERLACE]+[MIN \text{ PORCH RND}]$$
11. Estimate the Vertical field frequency:

$$[V \text{ FIELD RATE EST}]=1/[H \text{ PERIOD EST}]/[TOTAL \text{ V LINES}]*1000000$$
12. Find the actual horizontal period:

$$[H \text{ PERIOD}]=[H \text{ PERIOD EST}]/\left(\frac{[V \text{ FIELD RATE RQD}]}{[V \text{ FIELD RATE EST}]}\right)$$
13. Find the actual Vertical field frequency:

$$[V \text{ FIELD RATE}]=1/[H \text{ PERIOD}]/[TOTAL \text{ V LINES}]*1000000$$
14. Find the Vertical frame frequency:

$$[V \text{ FRAME RATE}]=\left(\text{IF}([INT \text{ RQD?}]="y", [V \text{ FIELD RATE}]/2, [V \text{ FIELD RATE}])\right)$$
15. Find number of pixels in left margin:

$$[LEFT \text{ MARGIN (PIXELS)}]$$

$$=\left(\text{IF}([MARGINS \text{ RQD?}]="Y", \text{ROUND}(\left(\frac{[H \text{ PIXELS RND}]*[MARGIN\%]}{100/[CELL \text{ GRAN RND}]}\right),0))\right)*[CELL \text{ GRAN RND}],0)$$
16. Find number of pixels in right margin:

$$[RIGHT \text{ MARGIN (PIXELS)}]$$

$$=\left(\text{IF}([MARGINS \text{ RQD?}]="Y", \text{ROUND}(\left(\frac{[H \text{ PIXELS RND}]*[MARGIN\%]}{100/[CELL \text{ GRAN RND}]}\right),0))\right)*[CELL \text{ GRAN RND}],0)$$
17. Find total number of active pixels in image and left and right margins:

$$[TOTAL \text{ ACTIVE PIXELS}]$$

$$=[H \text{ PIXELS RND}]+[LEFT \text{ MARGIN (PIXELS)}]+[RIGHT \text{ MARGIN (PIXELS)}]$$
18. Find the ideal blanking duty cycle from the blanking duty cycle equation:

$$[IDEAL \text{ DUTY CYCLE}]=[C'] -\left(\frac{[M']*[H \text{ PERIOD}]}{1000}\right)$$
19. Find the number of pixels in the blanking time to the nearest double character cell:

$$[H \text{ BLANK (PIXELS)}]$$

$$=\left(\text{ROUND}(\left(\frac{[TOTAL \text{ ACTIVE PIXELS}]*[IDEAL \text{ DUTY CYCLE}]}{100-[IDEAL \text{ DUTY CYCLE}]}\right)/(2*[CELL \text{ GRAN RND}]),0)\right)*(2*[CELL \text{ GRAN RND}])$$
20. Find total number of pixels:

$$[TOTAL \text{ PIXELS}]=[TOTAL \text{ ACTIVE PIXELS}]+[H \text{ BLANK (PIXELS)}]$$
21. Find pixel clock frequency:

$$[PIXEL \text{ FREQ}]=[TOTAL \text{ PIXELS}]/[H \text{ PERIOD}]$$
22. Find horizontal frequency:

$$[H \text{ FREQ}]=1000/[H \text{ PERIOD}]$$

7.4 Using Horizontal Scan Frequency to Find Stage 1 Parameters

Overview:

The total number of lines in each field is first calculated, similarly to the vertical case above, and from that the vertical refresh rate can be found. Then, using the blanking duty cycle, the blanking duration, and subsequently the associated horizontal parameters, can be found.

1. In order to give correct results, the number of horizontal pixels requested is first processed to ensure that it is divisible by the character size, by rounding it to the nearest character cell boundary:
[H PIXELS RND]=((ROUND([H PIXELS]/[CELL GRAN RND],0))*[CELL GRAN RND])
2. If interlace is requested, the number of vertical lines assumed by the calculation must be halved, as the computation calculates the number of vertical lines per field. In either case, the number of lines is rounded to the nearest integer.
[V LINES RND]=(IF([INT RQD?]="y",ROUND([V LINES]/2,0),ROUND([V LINES],0)))
3. Find the horizontal frequency required:
[H FREQ]=[I/P FREQ RQD]
4. Find number of lines in Top margin:
[TOP MARGIN (LINES)]
=(IF([MARGINS RQD?]="Y",ROUND((([MARGIN%]/100*[V LINES RND]),0),0))
5. Find number of lines in bottom margin:
[BOT MARGIN (LINES)]
=(IF([MARGINS RQD?]="Y",ROUND((([MARGIN%]/100*[V LINES RND]),0),0))
6. If interlace is required, then set variable [INTERLACE]=0.5:
[INTERLACE]=(IF([INT RQD?]="y",0.5,0))
7. Find the number of lines in V sync + back porch:
[V SYNC+BP]=ROUND((([MIN VSYNC+BP]*[H FREQ]/1000),0)
8. Find the number of lines in V back porch alone:
[V BACK PORCH]=[V SYNC+BP]-[V SYNC RND]
9. Find the total number of lines in Vertical field period
[TOTAL V LINES]
=[V LINES RND]+[TOP MARGIN (LINES)]+[BOT MARGIN (LINES)]+[INTERLACE]+[V SYNC+BP]+[MIN PORCH RND]
10. Find the actual Vertical field frequency:
[V FIELD RATE]=[H FREQ]/[TOTAL V LINES]*1000
11. Find the Vertical frame frequency:
[V FRAME RATE]=(IF([INT RQD?]="y",[V FIELD RATE]/2,[V FIELD RATE]))

12. Find number of pixels in left margin:

$$[\text{LEFT MARGIN (PIXELS)}] = (\text{IF}([\text{MARGINS RQD?}] = "Y", (\text{ROUND}([\text{H PIXELS RND}] * [\text{MARGIN\%}] / 100 / [\text{CELL GRAN RND}]), 0)) * [\text{CELL GRAN RND}], 0))$$
13. Find number of pixels in right margin:

$$[\text{RIGHT MARGIN (PIXELS)}] = (\text{IF}([\text{MARGINS RQD?}] = "Y", (\text{ROUND}([\text{H PIXELS RND}] * [\text{MARGIN\%}] / 100 / [\text{CELL GRAN RND}]), 0)) * [\text{CELL GRAN RND}], 0))$$
14. Find total number of active pixels in image and left and right margins:

$$[\text{TOTAL ACTIVE PIXELS}] = [\text{H PIXELS RND}] + [\text{RIGHT MARGIN (PIXELS)}] + [\text{LEFT MARGIN (PIXELS)}]$$
15. Find the ideal blanking duty cycle from the blanking duty cycle equation:

$$[\text{IDEAL DUTY CYCLE}] = [C'] - ([M'] / [H \text{ FREQ}])$$
16. Find the number of pixels in the blanking time to the nearest double character cell:

$$[\text{H BLANK (PIXELS)}] = (\text{ROUND}([\text{TOTAL ACTIVE PIXELS}] * [\text{IDEAL DUTY CYCLE}] / (100 - [\text{IDEAL DUTY CYCLE}]) / (2 * [\text{CELL GRAN RND}]), 0)) * (2 * [\text{CELL GRAN RND}])$$
17. Find total number of pixels:

$$[\text{TOTAL PIXELS}] = [\text{TOTAL ACTIVE PIXELS}] + [\text{H BLANK (PIXELS)}]$$
18. Find horizontal period:

$$[\text{H PERIOD}] = 1000 / [H \text{ FREQ}]$$
19. Find pixel clock frequency:

$$[\text{PIXEL FREQ}] = [\text{TOTAL PIXELS}] * [H \text{ FREQ}] / 1000$$

7.5 Using Pixel Clock Frequency to Find Stage 1 Parameters

Overview:

The total number of active pixels on each line is first calculated. The blanking equation can then be used to find the ideal horizontal period, and from that the ideal blanking duty cycle can be easily found. The actual blanking duration is found by rounding the ideal blanking time to the nearest multiple of twice the character cell granularity. Knowing that, the total number of pixels on a line is found, and hence the remaining horizontal parameters can be easily calculated.

When the horizontal parameters are known, the vertical parameters can be found in the same way as the above methods.

1. In order to give correct results, the number of horizontal pixels requested is first processed to ensure that it is divisible by the character size, by rounding it to the nearest character cell boundary:

$$[\text{H PIXELS RND}] = ((\text{ROUND}([\text{H PIXELS}] / [\text{CELL GRAN RND}]), 0)) * [\text{CELL GRAN RND}]$$
2. If interlace is requested, the number of vertical lines assumed by the calculation must be halved, as the computation calculates the number of vertical lines per field. In either case, the number of lines is rounded to the nearest integer.

$$[\text{V LINES RND}] = (\text{IF}([\text{INT RQD?}] = "y", \text{ROUND}([\text{V LINES}] / 2, 0), \text{ROUND}([\text{V LINES}], 0)))$$
3. Find the pixel clock rate required:

$$[\text{PIXEL FREQ}] = [\text{I/P FREQ RQD}]$$

4. Find number of pixels in left margin:

$$[\text{LEFT MARGIN (PIXELS)}] = (\text{IF}([\text{MARGINS RQD?}] = "Y", (\text{ROUND}([\text{H PIXELS RND}] * [\text{MARGIN\%}] / 100 / [\text{CELL GRAN RND}]), 0)) * [\text{CELL GRAN RND}], 0)$$
5. Find number of pixels in right margin:

$$[\text{RIGHT MARGIN (PIXELS)}] = (\text{IF}([\text{MARGINS RQD?}] = "Y", (\text{ROUND}([\text{H PIXELS RND}] * [\text{MARGIN\%}] / 100 / [\text{CELL GRAN RND}]), 0)) * [\text{CELL GRAN RND}], 0)$$
6. Find total number of active pixels in image and left and right margins:

$$[\text{TOTAL ACTIVE PIXELS}] = [\text{H PIXELS RND}] + [\text{RIGHT MARGIN (PIXELS)}] + [\text{LEFT MARGIN (PIXELS)}]$$
7. Find the ideal horizontal period from the blanking duty cycle equation:

$$[\text{IDEAL H PERIOD}] = (([\text{C}'] - 100) + (\text{SQRT}(((100 - [\text{C}'])^2) + (0.4 * [\text{M}'] * ([\text{TOTAL ACTIVE PIXELS}] + [\text{RIGHT MARGIN (PIXELS)}] + [\text{LEFT MARGIN (PIXELS)}]) / [\text{PIXEL FREQ}])))) / 2 / [\text{M}'] * 1000$$
8. Find the ideal blanking duty cycle from the blanking duty cycle equation:

$$[\text{IDEAL DUTY CYCLE}] = [\text{C}'] - ([\text{M}'] * [\text{IDEAL H PERIOD}] / 1000)$$
9. Find the number of pixels in the blanking time to the nearest double character cell:

$$[\text{H BLANK (PIXELS)}] = (\text{ROUND}([\text{TOTAL ACTIVE PIXELS}] * [\text{IDEAL DUTY CYCLE}] / (100 - [\text{IDEAL DUTY CYCLE}]) / (2 * [\text{CELL GRAN RND}]), 0)) * (2 * [\text{CELL GRAN RND}])$$
10. Find total number of pixels:

$$[\text{TOTAL PIXELS}] = [\text{TOTAL ACTIVE PIXELS}] + [\text{H BLANK (PIXELS)}]$$
11. Find horizontal frequency:

$$[\text{H FREQ}] = [\text{PIXEL FREQ}] / [\text{TOTAL PIXELS}] * 1000$$
12. Find horizontal period:

$$[\text{H PERIOD}] = 1000 / [\text{H FREQ}]$$
13. Find number of lines in Top margin:

$$[\text{TOP MARGIN (LINES)}] = (\text{IF}([\text{MARGINS RQD?}] = "Y", \text{ROUND}([\text{MARGIN\%}] / 100 * [\text{V LINES RND}]), 0), 0)$$
14. Find number of lines in Bottom margin:

$$[\text{BOT MARGIN (LINES)}] = (\text{IF}([\text{MARGINS RQD?}] = "Y", \text{ROUND}([\text{MARGIN\%}] / 100 * [\text{V LINES RND}]), 0), 0)$$
15. If interlace is required, then set variable $[\text{INTERLACE}] = 0.5$:

$$[\text{INTERLACE}] = (\text{IF}([\text{INT RQD?}] = "y", 0.5, 0))$$
16. Find the number of lines in V sync + back porch:

$$[\text{V SYNC+BP}] = \text{ROUND}([\text{MIN VSYNC+BP}] * [\text{H FREQ}] / 1000, 0)$$
17. Find the number of lines in V back porch alone:

$$[\text{V BACK PORCH}] = [\text{V SYNC+BP}] - [\text{V SYNC RND}]$$
18. Find the total number of lines in Vertical field period

[TOTAL V LINES]
 =[V LINES RND]+[TOP MARGIN (LINES)]+[BOT MARGIN (LINES)]+[INTERLACE]+[V SYNC+BP]+[MIN PORCH RND]

19. Find the Vertical field frequency:

[V FIELD RATE]=[H FREQ]/[TOTAL V LINES]*1000

20. Find the Vertical frame frequency:

[V FRAME RATE]=(IF([INT RQD?]="y",[V FIELD RATE]/2,[V FIELD RATE]))

7.6 Using Stage 1 Parameters to Derive Stage 2 Parameters

The stage 2 parameters use the output from stage 1 and calculate remaining parameters according to the needs of the system. Not all of these parameters would be needed in a typical system - some are shown for reference only.

1. Find the addressable lines per frame:

[ADDR LINES PER FRAME]=(IF([INT RQD?]="y",[V LINES RND]*2,[V LINES RND]))

2. Find the character time (in ns):

[CHAR TIME]=[CELL GRAN RND]/[PIXEL FREQ]*1000

3. Find the total number of lines in a frame:

[TOTAL LINES PER FRAME]
 =(IF([INT RQD?]="y",2*([V LINES RND]+[TOP MARGIN (LINES)]+[BOT MARGIN (LINES)]+[V SYNC+BP]+[INTERLACE]+[MIN PORCH RND]),([V LINES RND]+[TOP MARGIN (LINES)]+[BOT MARGIN (LINES)]+[V SYNC+BP]+[INTERLACE]+[MIN PORCH RND])))

4. Find the total number of characters in a horizontal line:

[TOTAL H TIME (CHARS)]=ROUND([TOTAL PIXELS]/[CELL GRAN RND],0)

5. Find the horizontal addressable time (in us):

[H ADDR TIME]=[H PIXELS RND]/[PIXEL FREQ]

6. Find the horizontal addressable time (in chars):

[H ADDR TIME (CHARS)]=ROUND([H PIXELS RND]/[CELL GRAN RND],0)

7. Find the horizontal blanking time (in us):

[H BLANK]=[H BLANK (PIXELS)]/[PIXEL FREQ]

8. Find the horizontal blanking time (in chars):

[H BLANK (CHARS)]=ROUND([H BLANK (PIXELS)]/[CELL GRAN RND],0)

9. Find the horizontal blanking + margin time (in us):

[H BLANK + MARGIN]
 =([H BLANK (PIXELS)]+[RIGHT MARGIN (PIXELS)]+[LEFT MARGIN (PIXELS)])/[PIXEL FREQ]

10. Find the horizontal blanking + margin time (in chars):

$$[H \text{ BLANK} + \text{MARGIN}(\text{CHARS})]$$

$$= \text{ROUND}([H \text{ BLANK}(\text{PIXELS}) + [\text{RIGHT MARGIN}(\text{PIXELS})] + [\text{LEFT MARGIN}(\text{PIXELS})]] / [\text{CELL GRAN RND}], 0)$$
11. Find the actual horizontal active video duty cycle (in %):

$$[\text{ACTUAL DUTY CYCLE}] = [H \text{ BLANK}(\text{CHARS})] / [\text{TOTAL H TIME}(\text{CHARS})] * 100$$
12. Find the image video duty cycle (in %):

$$[\text{BLANK} + \text{MARGIN DUTY CYCLE}]$$

$$= [H \text{ BLANK} + \text{MARGIN}(\text{CHARS})] / [\text{TOTAL H TIME}(\text{CHARS})] * 100$$
13. Find the left margin time (in us)

$$[\text{LEFT MARGIN}] = [\text{LEFT MARGIN}(\text{PIXELS})] / [\text{PIXEL FREQ}] * 1000$$
14. Find the number of characters in the left margin (in chars):

$$[\text{LEFT MARGIN}(\text{CHARS})] = [\text{LEFT MARGIN}(\text{PIXELS})] / [\text{CELL GRAN RND}]$$
15. Find the right margin time (in us)

$$[\text{RIGHT MARGIN}] = [\text{RIGHT MARGIN}(\text{PIXELS})] / [\text{PIXEL FREQ}] * 1000$$
16. Find the number of characters in the right margin (in chars):

$$[\text{RIGHT MARGIN}(\text{CHARS})] = [\text{RIGHT MARGIN}(\text{PIXELS})] / [\text{CELL GRAN RND}]$$
17. Find the number of pixels in the horizontal sync period:

$$[H \text{ SYNC}(\text{PIXELS})]$$

$$= (\text{ROUND}([H \text{ SYNC}\%] / 100 * [\text{TOTAL PIXELS}] / [\text{CELL GRAN RND}], 0)) * [\text{CELL GRAN RND}]$$
18. Find the number of pixels in the horizontal front porch period:

$$[H \text{ FRONT PORCH}(\text{PIXELS})] = ([H \text{ BLANK}(\text{PIXELS})] / 2) - [H \text{ SYNC}(\text{PIXELS})]$$
19. Find the number of pixels in the horizontal back porch period:

$$[H \text{ BACK PORCH}(\text{PIXELS})] = [H \text{ FRONT PORCH}(\text{PIXELS})] + [H \text{ SYNC}(\text{PIXELS})]$$
20. Find the number of characters in the horizontal sync period:

$$[H \text{ SYNC}(\text{CHARS})] = [H \text{ SYNC}(\text{PIXELS})] / [\text{CELL GRAN RND}]$$
21. Find the horizontal sync period (in us):

$$[H \text{ SYNC}] = [H \text{ SYNC}(\text{PIXELS})] / [\text{PIXEL FREQ}]$$
22. Find the number of characters in the horizontal front porch period:

$$[H \text{ FRONT PORCH}(\text{CHARS})] = [H \text{ FRONT PORCH}(\text{PIXELS})] / [\text{CELL GRAN RND}]$$
23. Find the horizontal front porch period (in us):

$$[H \text{ FRONT PORCH}] = [H \text{ FRONT PORCH}(\text{PIXELS})] / [\text{PIXEL FREQ}]$$
24. Find the number of characters in the horizontal back porch period:

$$[H \text{ BACK PORCH}(\text{CHARS})] = [H \text{ BACK PORCH}(\text{PIXELS})] / [\text{CELL GRAN RND}]$$
25. Find the horizontal back porch period (in us):

$$[H \text{ BACK PORCH}] = [H \text{ BACK PORCH}(\text{PIXELS})] / [\text{PIXEL FREQ}]$$
26. Find the vertical frame period (in ms):

[V FRAME PERIOD]
=(IF([INT RQD?]="y",[TOTAL V LINES]*[H PERIOD]/1000*2,[TOTAL V LINES]*[H PERIOD]/1000))

27. Find the vertical field period(in ms):

[V FIELD PERIOD]=[TOTAL V LINES]*[H PERIOD]/1000

28. Find the addressable vertical period per frame (in ms):

[V ADDR TIME PER FRAME]

=(IF([INT RQD?]="y",[V LINES RND]*[H PERIOD]/1000*2,[V LINES RND]*[H PERIOD]/1000))

29. Find the addressable vertical period per field (in ms):

[V ADDR TIME PER FIELD]=[V LINES RND]*[H PERIOD]/1000

30. Find the number of lines in the odd blanking period:

[V ODD BLANKING (LINES)]=[V SYNC+BP]+[MIN PORCH RND]

31. Find the odd blanking period (in ms):

[V ODD BLANKING]=[V SYNC+BP]+[MIN PORCH RND])*[H PERIOD]/1000

32. Find the number of lines in the even blanking period:

[V EVEN BLANKING (LINES)]=[V SYNC+BP]+(2*[INTERLACE])+[MIN PORCH RND]

33. Find the even blanking period (in ms):

[V EVEN BLANKING]

=([V SYNC+BP]+(2*[INTERLACE])+[MIN PORCH RND])/1000*[H PERIOD]

34. Find the top margin period (in us):

[TOP MARGIN]=[TOP MARGIN (LINES)]*[H PERIOD]

35. Find the odd front porch period (in us):

[V ODD FRONT PORCH]=[MIN PORCH RND]+[INTERLACE])*[H PERIOD]

36. Find the number of lines in the odd front porch period:

[V ODD FRONT PORCH(LINES)]=[MIN PORCH RND]+[INTERLACE]

37. Find the even front porch period (in us):

[V EVEN FRONT PORCH]=[MIN PORCH RND]*[H PERIOD]

38. Find the vertical sync period (in us):

[V SYNC]=[V SYNC RND]*[H PERIOD]

39. Find the even front porch period (in us):

[V EVEN BACK PORCH]=[V BACK PORCH]+[INTERLACE])*[H PERIOD]

40. Find the number of lines in the even front porch period:

[V EVEN BACK PORCH (LINES)]=[V BACK PORCH]+[INTERLACE]

41. Find the odd back porch period (in us):
 $[V \text{ ODD BACK PORCH}] = [V \text{ BACK PORCH}] * [H \text{ PERIOD}]$

42. Find the bottom margin period (in us):
 $[BOT \text{ MARGIN}] = [BOT \text{ MARGIN (LINES)}] * [H \text{ PERIOD}]$

APPENDIX A

GTF: Q & A

Q: Why are the timing parameters that define the sync signal so important?

A: Sync signals for displays drastically affect the quality, performance and even reliability of CRT displays. Even small differences in timing parameters can significantly affect image position and size, causing problems for the user. Difference in blanking times can lead to excessive power dissipation and electrical stress in the scanning circuits, or at the other extreme, incomplete or distorted images being displayed.

Q: Why can't the monitor automatically set itself to any timing format?

A: Multimode monitors can measure the incoming sync signal frequencies and thus sync to any frequency within their range of operation. But the sync signals carry no information regarding the relationship of the video signal to the sync pulses. Each timing format, up until now, has had a unique definition of these parameters, and so it has not even been possible for the display to accurately 'guess' where the image might be, though modern displays do make an attempt to do this, based usually on the preset timing information that it does have.

Q: How will GTF help the monitor automatically set itself to any timing format?

A: GTF defines the relationship between syncs and video signals at any frequency of operation. The display can measure the incoming sync frequency, and thus can predict where the image will start and finish, even though it may not have been preset at that operating point.

Q: Will this require all monitors to have complex microcontrollers?

A: In order to identify the mode, most present day multisync monitors use a simple microcontroller to measure syncs. GTF will simplify the microcode in that it will eliminate the guess-work presently required when an unknown sync signal is applied. However, if required, even analog multisyncs can use simple frequency to voltage conversions to compute the new image size and position within a reasonable accuracy.

Q: Is this GTF system compatible with existing monitors?

A: The GTF algorithm was intentionally chosen to create timings that lie centered in the range of a large number of existing formats. However, as older monitors do not have knowledge of the GTF system, they may still require some user adjustment typical of any other new format.

Q: There are many standard timing formats, including those created by VESA. Will GTF replace these?

A: Standard timings, such as the standard VGA 60Hz timing, will continue to exist and be used, but may eventually be replaced by GTF versions. VESA will still maintain its existing Display Monitor Timings (DMT) and may even produce new discrete timings in the future that do not comply with the GTF method. This may be necessary when particular circumstances dictate precise parameter definition to meet a number of simultaneous constraints. An example would be when a specific timing signal is required that defines pixel clock, vertical refresh rate and horizontal rate simultaneously, say for a HDTV format. In contrast, the GTF fixes the relationship between these parameters in order to guarantee its predictable nature, which is usually of much greater importance to the average user.

Q: Will VESA produce a matrix of GTF formats and timings at, say, 5Hz refresh rate intervals (i.e., 75Hz, 80Hz, 90 Hz...)?

A: No. GTF permits a common "standard" timing to be calculated for practically any format and refresh rate, and so it would be meaningless to try to develop a restricted matrix of relatively few timings using this method. The need for standards for specific, EXACT refresh rates, such as might be needed for video compatibility or other applications, are better handled by discrete monitor timing standards, and will be developed by VESA as needed.

Q: GTF allows very high vertical refresh rates to be generated, e.g. above 150Hz. Is VESA implying that faster refresh rates are better?

A: By allowing a standard method of defining refresh rates, any rate can be computed as required by the industry and/or user. Thus VESA is neither limiting nor recommending the use of higher refresh rates, though most users generally seem to prefer higher rates. Also, there are emerging applications that need high refresh rate, such as stereo vision. GTF will allow a method of defining these.

Q: For best compatibility with video systems, programmable pixel clocks should be synthesized from a master oscillator with a base frequency that is a multiple of 2.25MHz. Why doesn't the GTF specification mandate this?

A: GTF can generate timings based upon any given pixel clock frequency. The $N \times 2.25\text{MHz}$ base reference is a hardware consideration, that will determine the available set of actual pixel rates, in conjunction with the complexity of the pixel clock synthesizing hardware. These constraints must be determined before hand by the system software to determine which pixel clocks can be used and the GTF should be used accordingly, specifying the pixel clock as the defining parameter. However, generally such system restraints also call for precise vertical refresh rates to be used (i.e. TV, HDTV etc.). In those limited applications, VESA Discrete Monitor Timings (DMT) are a better choice.

Q: How can I use GTF to give me an exact refresh rate and an exact pixel clock frequency?

A: GTF cannot be used in this way. Either an exact refresh rate can be specified, an exact horizontal scan frequency or exact pixel clock. In most cases the pixel clock will be subject to some quantization due to the limitations of the clock synthesis hardware. In that case, the desired refresh rate should be used as the input in a first pass GTF calculation to find the ideal pixel clock. The pixel clock should then be rounded to the nearest achievable frequency and then used as the defining input to a second calculation of the GTF. Because of this rounding error, the actual final refresh rate will be slightly different than the desired refresh, the error being set by the accuracy of the pixel clock.

Q: Why doesn't GTF allow me to set both refresh and pixel clock accurately? VESA discrete timings achieve this!

A: The DMT achieve this by varying the blanking times. However, this destroys the predictability of the blanking time from a simple measurement of the horizontal frequency and hence prevents the monitor from being able to accurately 'auto align' to an unknown new mode. Where precise refresh rate and pixel clock requirements are mandatory in the system, DMT should be used.

Q: What is Secondary GTF?

A: Secondary GTF is a method that allows a monitor and graphics controller to use a blanking ratio that is different from the blanking ratio that is produced by the default parameters for GTF. This enables the use of shorter blanking ratios that in turn can produce timing modes that have a higher pixel resolution for a given pixel frequency.

Q: How does the monitor avoid confusion between the 350-line VGA mode and a secondary GTF timing?

A: The monitor knows that all timing modes with a horizontal frequency below the "Second GTF start frequency" shall be treated as legacy timings. The Second GTF start frequency shall always be set to a value higher than the horizontal frequency used for any supported legacy timings that have horizontal positive and vertical negative sync polarities.

The companion spreadsheet for the GTF Standard can be downloaded from the VESA website.

Go to www.vesa.org and click on Free Standards and then Public FTP. The file is listed under GTF.

Send an email to moderator@vesa.org if you have any problems accessing the file.